

# MIM EXTRA #1

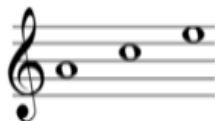
1			2				3		4
	■	■		■	■	■		■	
5		6		■	7			■	
	■	8				■	9		
10				■	11	12	■	■	
	■		■	■	13		14		■
15				■		■		■	16
	■		■	■		■	17		
	■	■	■	18	■	■		■	
19									■

## ACROSS



1. What is this? (5,4)
5. What shape is a notehead? (4)
7. Moving Into Music (initials) (3)
8. Famous Australian opera singer: \_ \_ \_ \_ Nellie Melba (4)
9. This animal can't see but makes high pitched sounds to communicate (3)
10. A rhythmic unit in music (4)
11. "**do** a deer, a female deer ..... \_ \_ a note to follow **so**" (2)
13. A woodwind instrument (4)
15. A long one on your thumb might be useful for a guitarist (4)

17. Name these three notes (3)



19. Moving Into Music's end of year concert is called the - - - - - Concert (9)

## DOWN

1. This brass instrument has a slide! (8)
2. What note is a semitone below B? (1,4)
3. "Mary had a little - - - -" (4)
4. Musical term: loud (5)
6. Musical term: slowly (6)
7. A tuneful string of notes (6)



12. Name these two notes (2)

14. This U.S. President sang *Amazing Grace* at a funeral (5)
16. A most important signature in music (3)
18. Solfège - third note (2)